



**2 Bedroom
Apartment
located in
Corscombe Close,
Weymouth**

**Asking Price
£207,500**



Flat 14, 1
Corscombe Close
Weymouth
DT4 0UH



Hallway

Laminate flooring. Two storage cupboards. Wall mounted storage heater. Security entrance phone. Telephone point. Doors to all rooms.

Lounge

14'7 max x 13

Fully carpeted. Two sliding doors providing access to the 2 balconies, providing lake and harbour views. Wall mounted storage heater.

Kitchen

11'3 max x 6 max

Range of wall and floor units with work surfaces over , inset sink unit, inset hob and oven. Built in fridge/freezer, built in washing machine. Window providing views towards Radipole lake. Laminate flooring.

Bedroom One

11'7 x 8'9

Irregular shaped room, not maximum measurements Fully carpeted. Double glazed window, wall mounted electric heater. Built in wardrobe. Door to:

En Suite

Comprising WC, wash hand basin and shower cubicle. Tiling. Shaver point.

Bedroom Two

11'3 x 8'8

Fully carpeted. Double glazed window with views towards Radipole lake. Wall mounted electric heater

Bathroom

Comprising panelled bath with shower attachment, pedestal wash hand basin and WC. Tiling. Shaver point. Laminate flooring. Wall mounted electric heater

Outside

There is an allocated parking space.

Agents Note

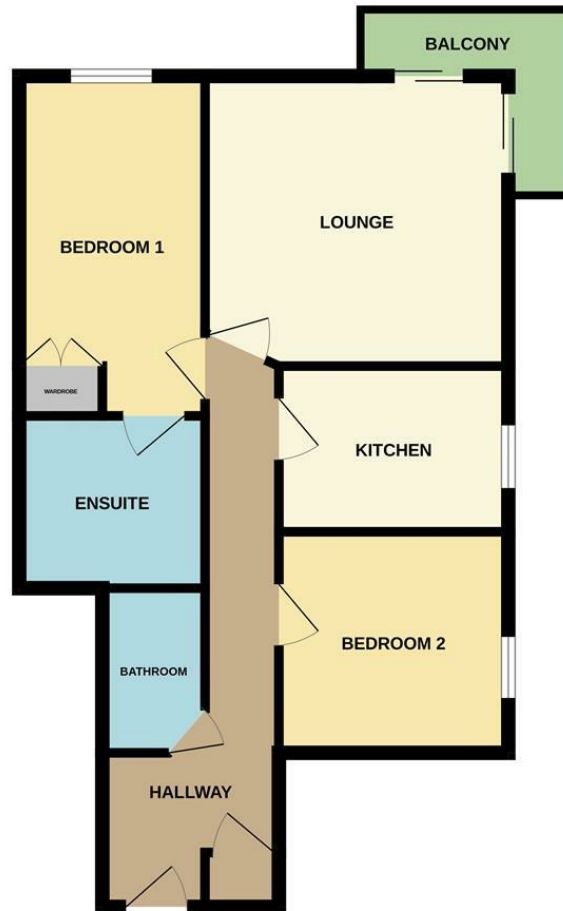
These particulars do not form part of any offer or contract and must not be relied upon as statements or representations of fact. Any areas, measurements or distances are approximate. The text, photographs, plans and measurements are for guidance only and are not necessarily comprehensive.

Lease details

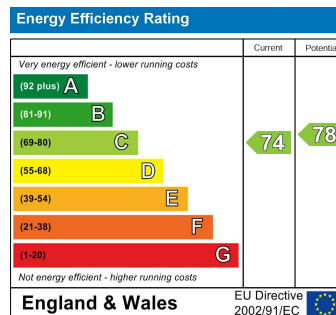
125 years from 1 January 2003
Further details to be confirmed



FIRST FLOOR



Whilst every attempt has been made to ensure the accuracy of the floorplan contained here, measurements of doors, windows, rooms and any other items are approximate and no responsibility is taken for any error, omission or mis-statement. This plan is for illustrative purposes only and should be used as such by any prospective purchaser. The services, systems and appliances shown have not been tested and no guarantee as to their operability or efficiency can be given.
Made with Metropix ©2025.



CONTACT

11 Frederick Place
St Thomas Street
Weymouth
Dorset
DT4 8HQ

E: admin@rogermcghee.co.uk
T: 01305 779655
www.rogermcghee.co.uk

